

SHOPPES AT OXFORD

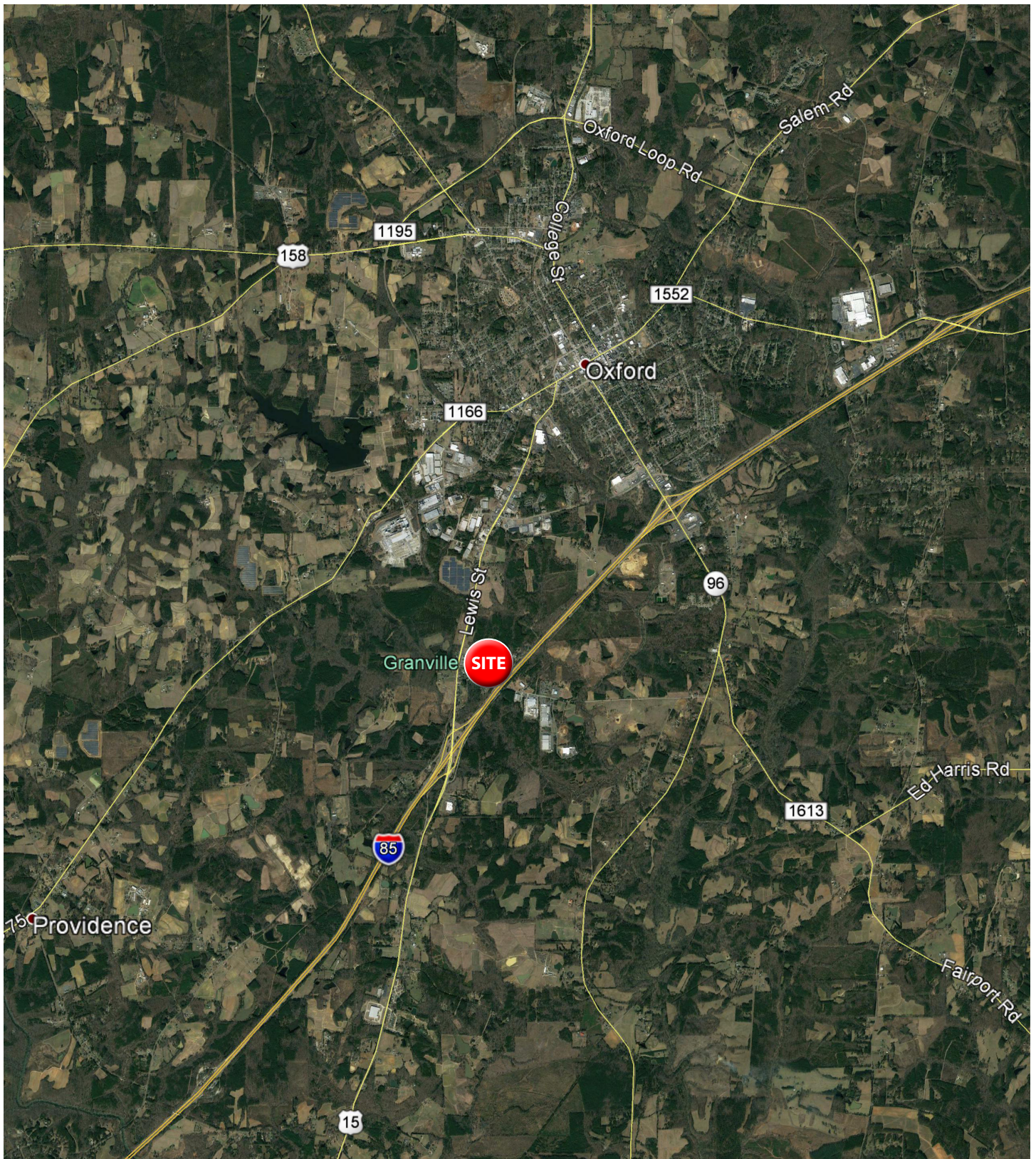
1015 LEWIS STREET
OXFORD, NC 27565



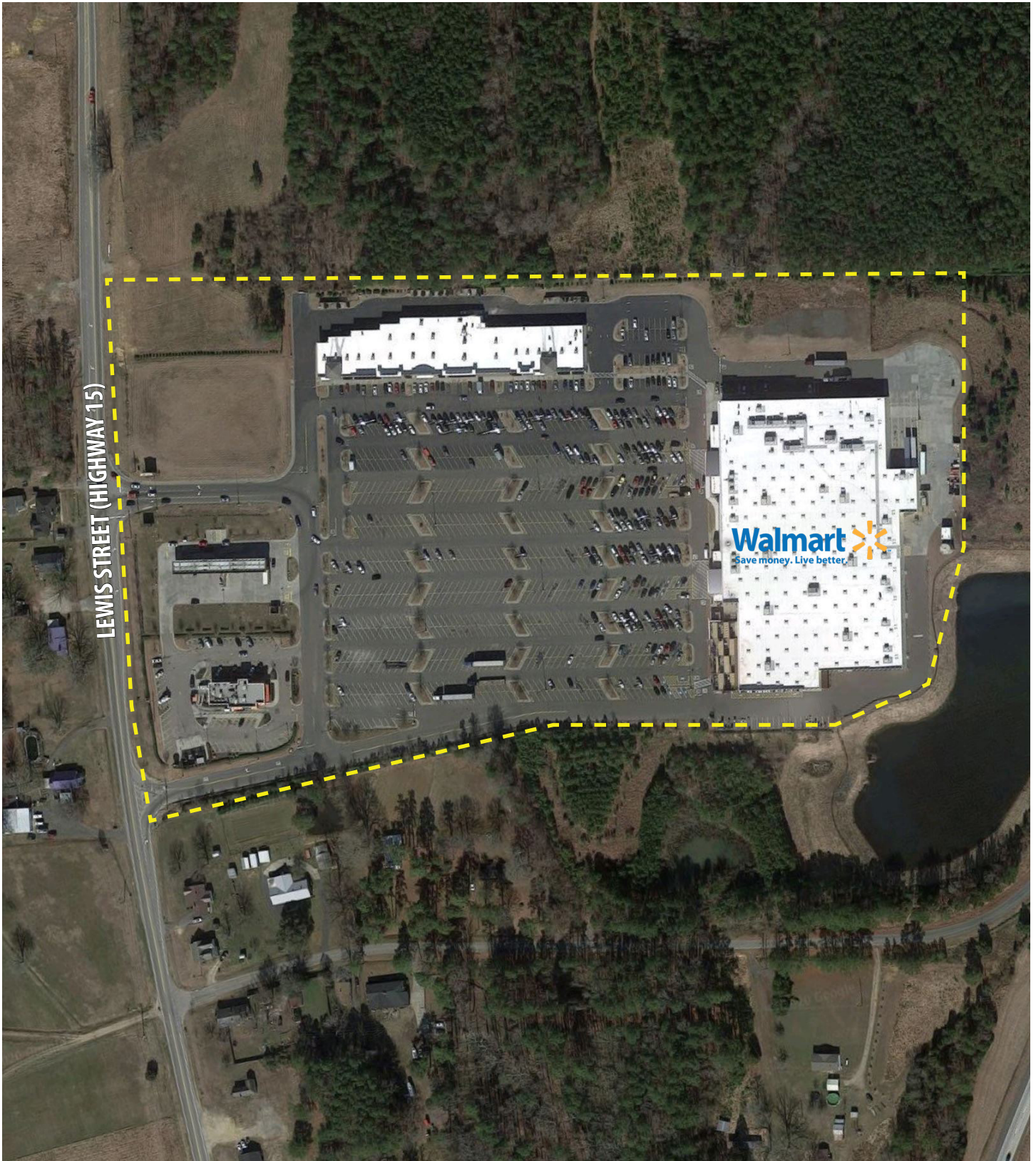
Max Dufour, Leasing
843.654.7859
max.dufour@wrsrealty.com

Mary Dufour, Outparcels
803.644.2831
mdufour@wrsrealty.com

LOCATION



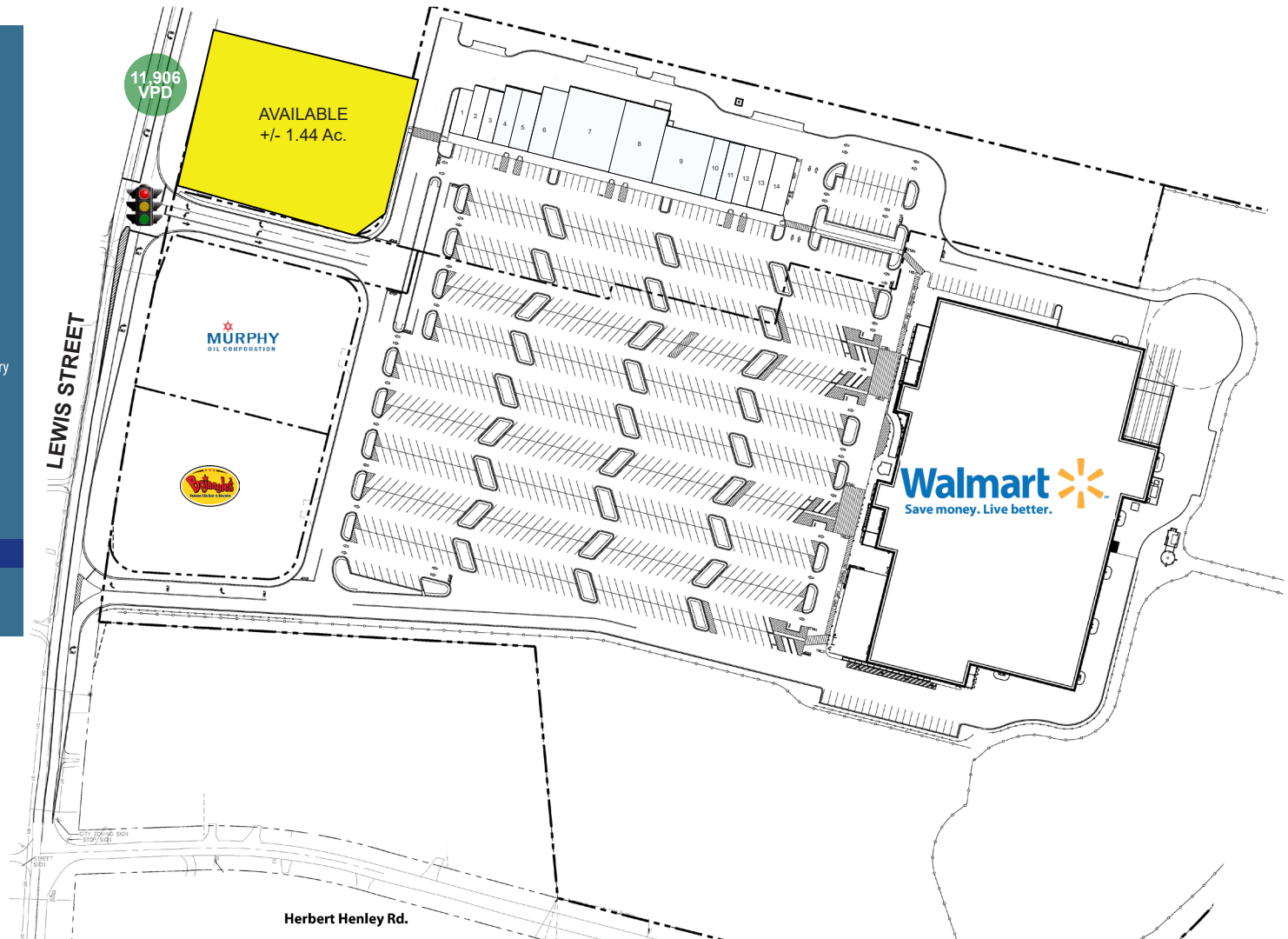
AERIAL



INLINE RETAIL & OUTPARCELS AVAILABLE

Space	Tenant
1	Verizon
2	Liberty Tax
3	Cricket Wireless
4 & 5	Cato
6	Shoe Show
7	Dollar Tree
8	La Rancherita
9	Aaron's Rents
10	MVP Nail Spa
11	Dulce Marias Ice Cream & Bakery
12	Zen Tobacco & Vape
13	Internet Cafe
14	Hwy 55 Restaurant

Outparcels	Tenant
1	AVAILABLE 1.44 Ac
2	Murphy Oil
3	Bojangles



The information contained herein was obtained from sources believed reliable, however, WRS Inc. makes no guarantees, warranties, or representations as to the completeness or accuracy thereof. The presentation of this property is submitted subject to errors, omissions, change of tenants or conditions prior to sale or lease, or withdrawal without notice.
WRS Inc. | 550 Long Point Road | Mount Pleasant, SC 29464 | main 843.654.7888 | fax 843.654.7889

PROPERTY PHOTOS



5 MILE DEMOGRAPHIC SNAPSHOT



**Estimated
Population**
15,095



**Estimated
Households**
6,187



**Average HH
Income**
\$62,893



**Median HH
Income**
\$49,830



**Total
Businesses**
674



**Total
Employees**
6,378



DEMOGRAPHIC REPORT

Lat/Lon: 36.2793/-78.6033

RF1

1015 Lewis St		1 mi radius	3 mi radius	5 mi radius
Oxford, NC 27565				
POPULATION	2021 Estimated Population	250	8,651	15,095
	2026 Projected Population	258	8,933	15,528
	2010 Census Population	254	8,462	14,956
	2000 Census Population	241	8,473	14,235
	Projected Annual Growth 2021 to 2026	0.6%	0.7%	0.6%
	Historical Annual Growth 2000 to 2021	0.2%	0.1%	0.3%
HOUSEHOLDS	2021 Estimated Households	94	3,610	6,187
	2026 Projected Households	97	3,724	6,364
	2010 Census Households	92	3,365	5,842
	2000 Census Households	92	3,287	5,388
	Projected Annual Growth 2021 to 2026	0.6%	0.6%	0.6%
	Historical Annual Growth 2000 to 2021	0.1%	0.5%	0.7%
AGE	2021 Est. Population Under 10 Years	12.9%	11.4%	10.7%
	2021 Est. Population 10 to 19 Years	14.4%	11.9%	12.0%
	2021 Est. Population 20 to 29 Years	14.7%	13.7%	12.6%
	2021 Est. Population 30 to 44 Years	15.1%	14.1%	14.5%
	2021 Est. Population 45 to 59 Years	19.6%	19.7%	20.6%
	2021 Est. Population 60 to 74 Years	15.3%	18.5%	19.3%
	2021 Est. Population 75 Years or Over	8.0%	10.8%	10.3%
	2021 Est. Median Age	37.1	42.6	43.8
MARITAL STATUS & GENDER	2021 Est. Male Population	47.4%	45.6%	46.6%
	2021 Est. Female Population	52.6%	54.4%	53.4%
	2021 Est. Never Married	46.8%	36.6%	35.1%
	2021 Est. Now Married	33.3%	37.6%	40.6%
	2021 Est. Separated or Divorced	14.2%	18.7%	16.9%
	2021 Est. Widowed	5.6%	7.1%	7.5%
INCOME	2021 Est. HH Income \$200,000 or More	2.4%	2.5%	3.3%
	2021 Est. HH Income \$150,000 to \$199,999	2.3%	3.3%	3.0%
	2021 Est. HH Income \$100,000 to \$149,999	5.2%	9.5%	10.9%
	2021 Est. HH Income \$75,000 to \$99,999	10.1%	11.4%	14.2%
	2021 Est. HH Income \$50,000 to \$74,999	17.8%	17.9%	19.8%
	2021 Est. HH Income \$35,000 to \$49,999	13.7%	11.8%	12.8%
	2021 Est. HH Income \$25,000 to \$34,999	12.5%	10.5%	10.0%
	2021 Est. HH Income \$15,000 to \$24,999	11.1%	11.9%	10.3%
	2021 Est. HH Income Under \$15,000	24.9%	21.1%	15.7%
	2021 Est. Average Household Income	\$58,282	\$54,969	\$62,893
	2021 Est. Median Household Income	\$39,277	\$41,840	\$49,830
	2021 Est. Per Capita Income	\$21,960	\$23,093	\$25,959
	2021 Est. Total Businesses	57	453	674
	2021 Est. Total Employees	734	4,221	6,378

This report was produced using data from private and government sources deemed to be reliable. The information herein is provided without representation or warranty.

DEMOGRAPHIC REPORT

Lat/Lon: 36.2793/-78.6033

RF1

1015 Lewis St		1 mi radius	3 mi radius	5 mi radius
Oxford, NC 27565				
RACE	2021 Est. White	35.7%	38.3%	43.9%
	2021 Est. Black	45.1%	52.3%	47.0%
	2021 Est. Asian or Pacific Islander	0.3%	1.0%	0.9%
	2021 Est. American Indian or Alaska Native	0.5%	0.5%	0.4%
	2021 Est. Other Races	18.5%	7.9%	7.8%
HISPANIC	2021 Est. Hispanic Population	52	777	1,281
	2021 Est. Hispanic Population	21.0%	9.0%	8.5%
	2026 Proj. Hispanic Population	21.7%	9.6%	9.1%
	2010 Hispanic Population	18.5%	8.1%	7.4%
EDUCATION (Adults 25 or Older)	2021 Est. Adult Population (25 Years or Over)	163	6,022	10,696
	2021 Est. Elementary (Grade Level 0 to 8)	3.0%	5.7%	5.6%
	2021 Est. Some High School (Grade Level 9 to 11)	15.5%	10.0%	9.3%
	2021 Est. High School Graduate	32.0%	33.3%	32.5%
	2021 Est. Some College	19.5%	20.6%	20.8%
	2021 Est. Associate Degree Only	10.9%	9.7%	11.0%
	2021 Est. Bachelor Degree Only	14.5%	15.0%	15.8%
	2021 Est. Graduate Degree	4.5%	5.7%	5.1%
HOUSING	2021 Est. Total Housing Units	105	3,959	6,814
	2021 Est. Owner-Occupied	48.8%	49.0%	56.5%
	2021 Est. Renter-Occupied	40.9%	42.2%	34.3%
	2021 Est. Vacant Housing	10.2%	8.8%	9.2%
HOMES BUILT BY YEAR	2021 Homes Built 2010 or later	2.4%	1.6%	1.9%
	2021 Homes Built 2000 to 2009	6.6%	5.2%	9.0%
	2021 Homes Built 1990 to 1999	20.1%	10.4%	14.6%
	2021 Homes Built 1980 to 1989	20.4%	16.5%	14.9%
	2021 Homes Built 1970 to 1979	13.3%	19.1%	17.8%
	2021 Homes Built 1960 to 1969	9.3%	12.6%	11.7%
	2021 Homes Built 1950 to 1959	4.2%	5.9%	5.1%
	2021 Homes Built Before 1949	13.4%	19.9%	15.8%
HOME VALUES	2021 Home Value \$1,000,000 or More	0.4%	0.7%	0.6%
	2021 Home Value \$500,000 to \$999,999	4.1%	0.7%	0.9%
	2021 Home Value \$400,000 to \$499,999	0.8%	3.0%	2.7%
	2021 Home Value \$300,000 to \$399,999	6.0%	3.6%	4.4%
	2021 Home Value \$200,000 to \$299,999	14.1%	12.9%	17.9%
	2021 Home Value \$150,000 to \$199,999	16.9%	19.0%	18.6%
	2021 Home Value \$100,000 to \$149,999	12.2%	25.6%	23.8%
	2021 Home Value \$50,000 to \$99,999	20.3%	25.0%	21.6%
	2021 Home Value \$25,000 to \$49,999	1.9%	3.8%	3.5%
	2021 Home Value Under \$25,000	23.3%	5.7%	6.0%
	2021 Median Home Value	\$104,977	\$125,656	\$136,318
	2021 Median Rent	\$561	\$540	\$564

This report was produced using data from private and government sources deemed to be reliable. The information herein is provided without representation or warranty.

DEMOGRAPHIC REPORT

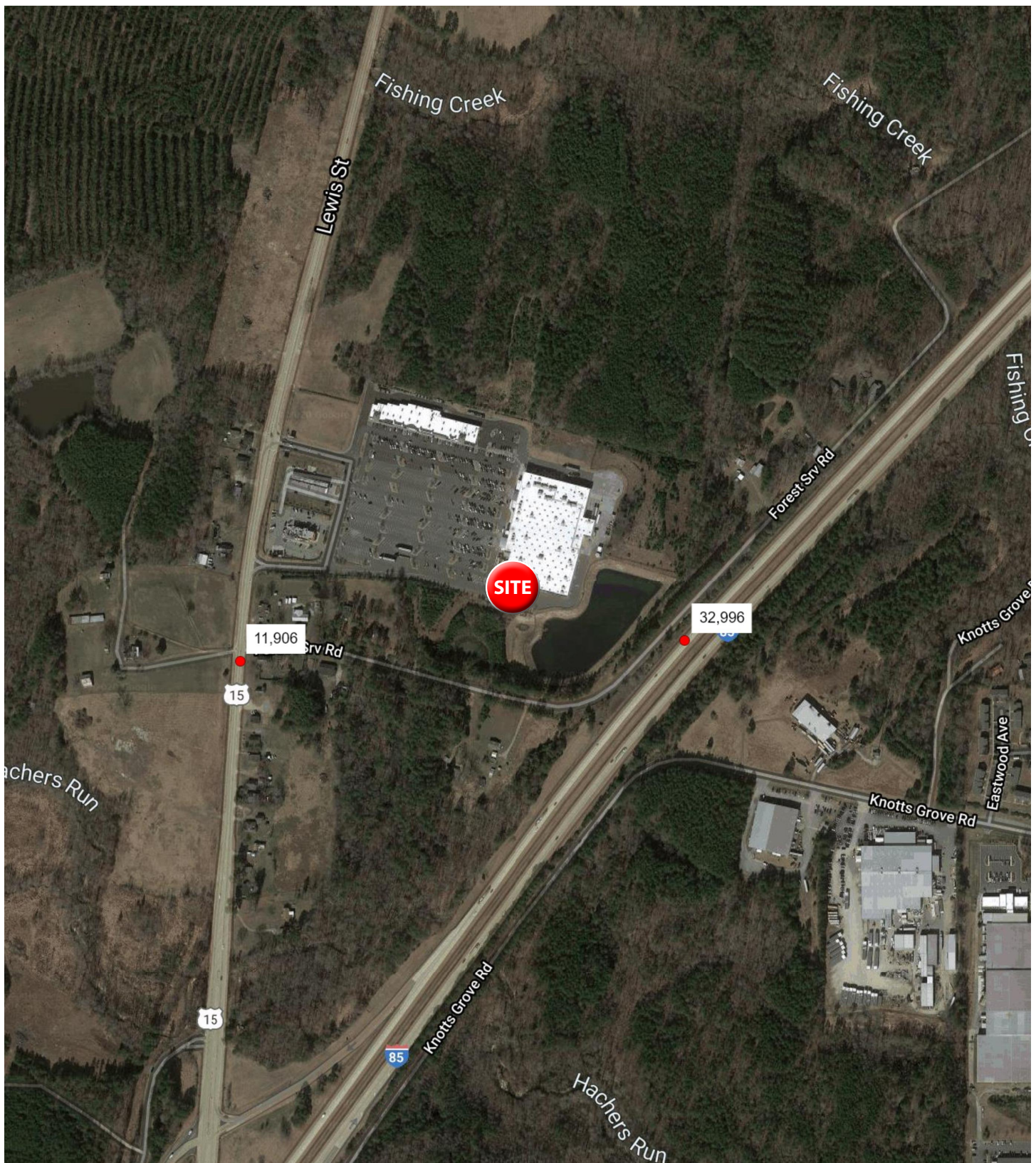
Lat/Lon: 36.2793/-78.6033

RF1

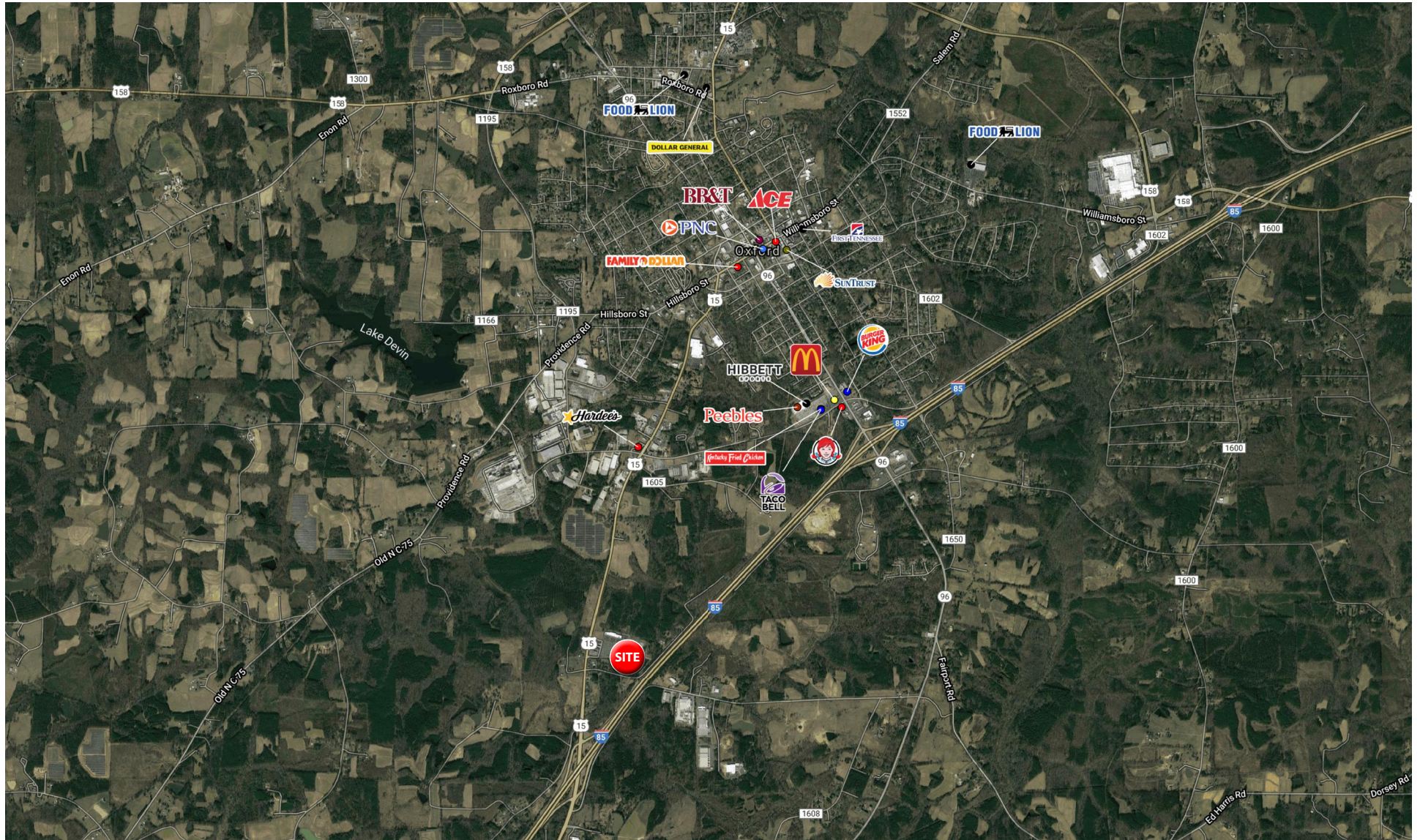
1015 Lewis St		1 mi radius	3 mi radius	5 mi radius
Oxford, NC 27565				
LABOR FORCE	2021 Est. Labor Population Age 16 Years or Over	197	7,088	12,457
	2021 Est. Civilian Employed	55.1%	53.1%	54.7%
	2021 Est. Civilian Unemployed	3.1%	3.6%	3.4%
	2021 Est. in Armed Forces	-	-	-
	2021 Est. not in Labor Force	41.9%	43.3%	41.9%
	2021 Labor Force Males	46.4%	44.2%	45.5%
	2021 Labor Force Females	53.6%	55.8%	54.5%
OCCUPATION	2021 Occupation: Population Age 16 Years or Over	108	3,763	6,813
	2021 Mgmt, Business, & Financial Operations	6.9%	10.4%	11.6%
	2021 Professional, Related	24.3%	22.0%	20.3%
	2021 Service	23.3%	23.8%	20.6%
	2021 Sales, Office	17.3%	18.3%	18.3%
	2021 Farming, Fishing, Forestry	3.1%	0.9%	0.8%
	2021 Construction, Extraction, Maintenance	6.6%	6.8%	8.2%
	2021 Production, Transport, Material Moving	18.5%	17.7%	20.1%
	2021 White Collar Workers	48.5%	50.7%	50.2%
	2021 Blue Collar Workers	51.5%	49.3%	49.8%
TRANSPORTATION TO WORK	2021 Drive to Work Alone	82.7%	83.7%	83.8%
	2021 Drive to Work in Carpool	12.1%	10.5%	9.8%
	2021 Travel to Work by Public Transportation	0.3%	0.5%	0.3%
	2021 Drive to Work on Motorcycle	-	-	-
	2021 Walk or Bicycle to Work	2.9%	1.5%	1.5%
	2021 Other Means	0.7%	1.4%	1.8%
	2021 Work at Home	1.4%	2.4%	2.7%
TRAVEL TIME	2021 Travel to Work in 14 Minutes or Less	30.0%	37.0%	33.2%
	2021 Travel to Work in 15 to 29 Minutes	31.2%	26.2%	30.1%
	2021 Travel to Work in 30 to 59 Minutes	30.9%	26.0%	29.2%
	2021 Travel to Work in 60 Minutes or More	6.0%	8.6%	8.6%
	2021 Average Travel Time to Work	20.7	19.7	21.0
CONSUMER EXPENDITURE	2021 Est. Total Household Expenditure	\$4.55 M	\$167.88 M	\$315.6 M
	2021 Est. Apparel	\$157.91 K	\$5.8 M	\$10.9 M
	2021 Est. Contributions, Gifts	\$242.86 K	\$9.11 M	\$17.33 M
	2021 Est. Education, Reading	\$135.34 K	\$5.01 M	\$9.32 M
	2021 Est. Entertainment	\$248.47 K	\$9.23 M	\$17.47 M
	2021 Est. Food, Beverages, Tobacco	\$714.37 K	\$26.21 M	\$49.08 M
	2021 Est. Furnishings, Equipment	\$154.02 K	\$5.73 M	\$10.86 M
	2021 Est. Health Care, Insurance	\$424.15 K	\$15.71 M	\$29.65 M
	2021 Est. Household Operations, Shelter, Utilities	\$1.51 M	\$55.37 M	\$103.41 M
	2021 Est. Miscellaneous Expenses	\$84.79 K	\$3.15 M	\$5.94 M
	2021 Est. Personal Care	\$60.66 K	\$2.25 M	\$4.22 M
	2021 Est. Transportation	\$821.51 K	\$30.3 M	\$57.42 M

This report was produced using data from private and government sources deemed to be reliable. The information herein is provided without representation or warranty.

TRAFFIC COUNTS



COMMERCIAL AERIAL





WRSINC
REAL ESTATE INVESTMENTS

550 Long Point Road
Mount Pleasant, SC 29464
843.654.7888 Office
843.654.7889 Fax
www.wrsrealestate.com